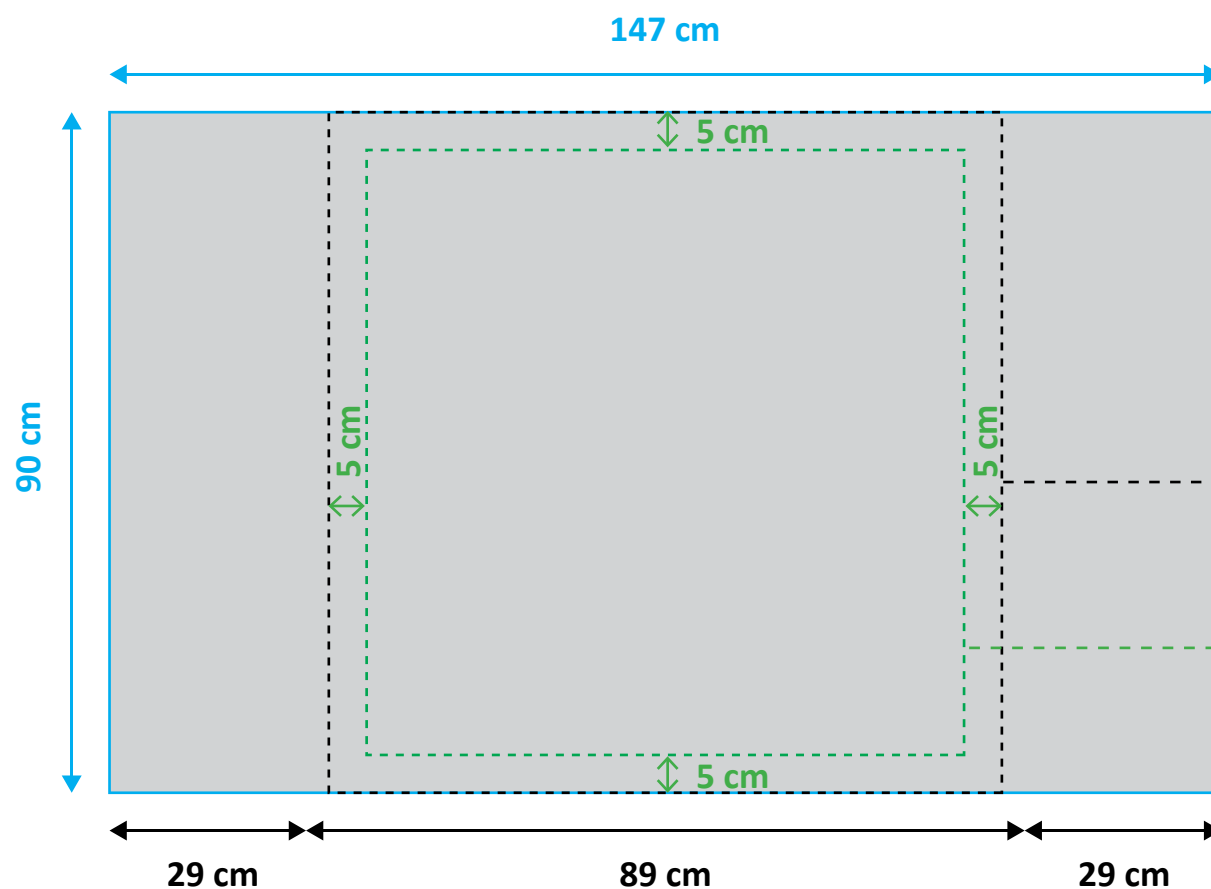
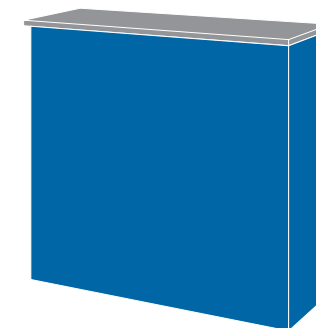


POP-UP TABLE M

147 x 90 cm



LAYOUT 147x90 cm

final size,
all graphics should be within this zone

VISIBLE AREA 89x90 cm

visible size - after mounting

SAFE AREA 79x80 cm

important elements (e.g. text, logo etc.)
should be within this area

PREPARING THE FILE FOR PRINT:

scale 1:1

file format: TIFF, PDF

CMYK colour model

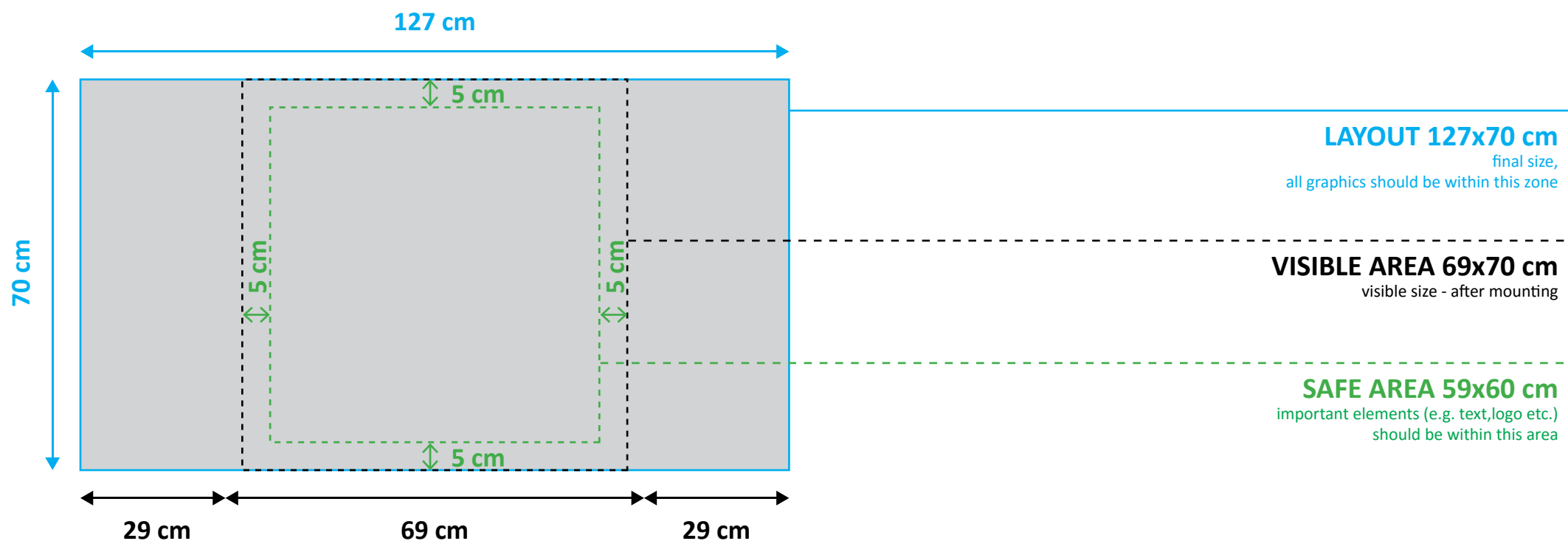
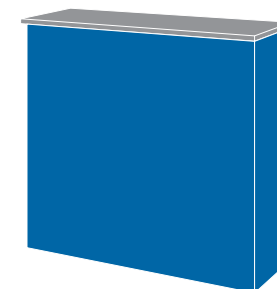
without bleed

resolution 150 dpi

outlined text

POP-UP TABLE S

127 x 70 cm



PREPARING THE FILE FOR PRINT:

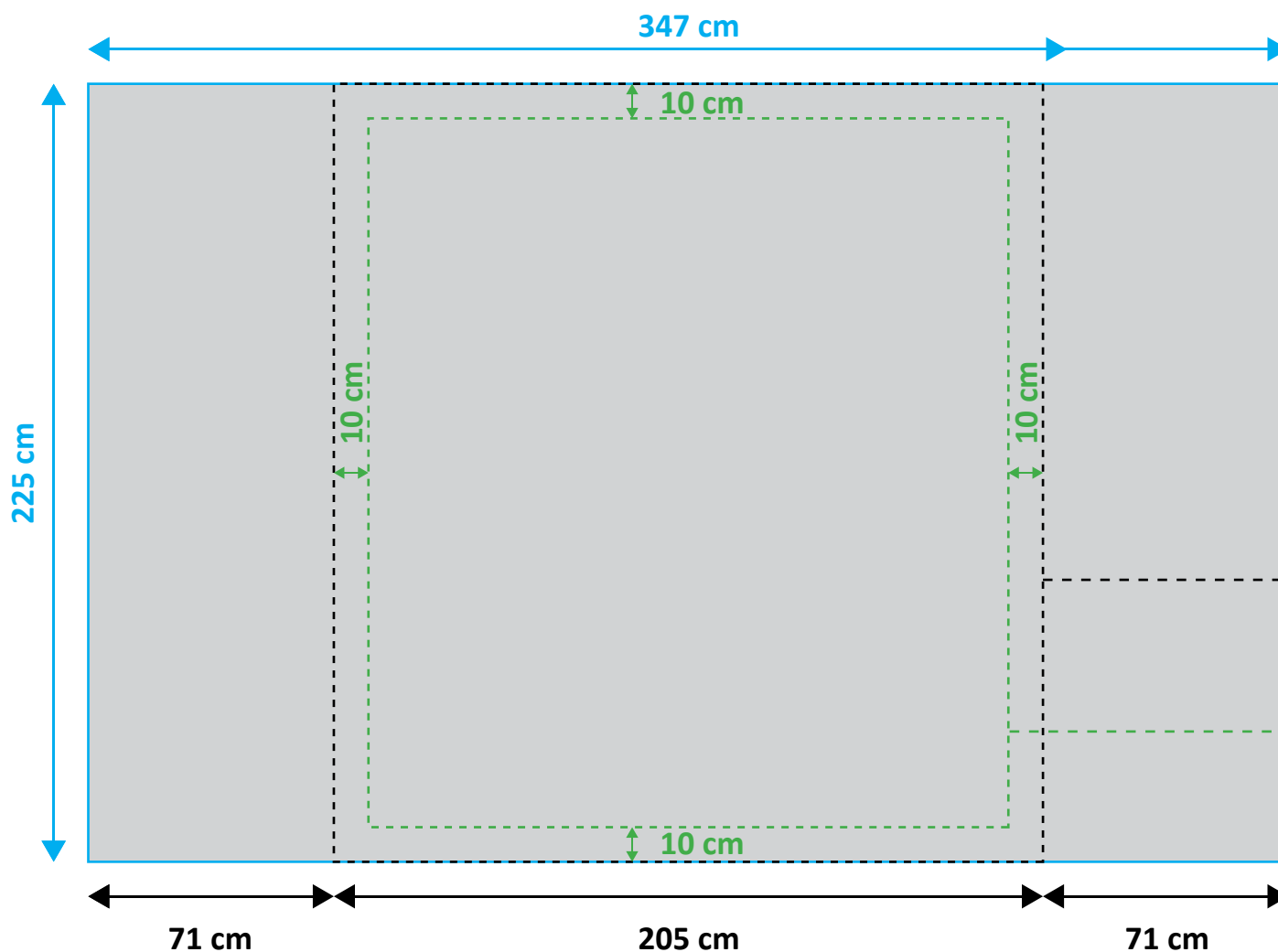
scale 1:1
file format: TIFF, PDF

CMYK colour model
without bleed

resolution 150 dpi
outlined text

POP-UP WALL CURVED 3x3

205 x 225 cm



LAYOUT 347x225 cm
final size,
all graphics should be within this zone

VISIBLE AREA 205x225 cm
visible size - after mounting

SAFE AREA 185x205 cm
important elements (e.g. text, logo etc.)
should be within this area

PREPARING THE FILE FOR PRINT:

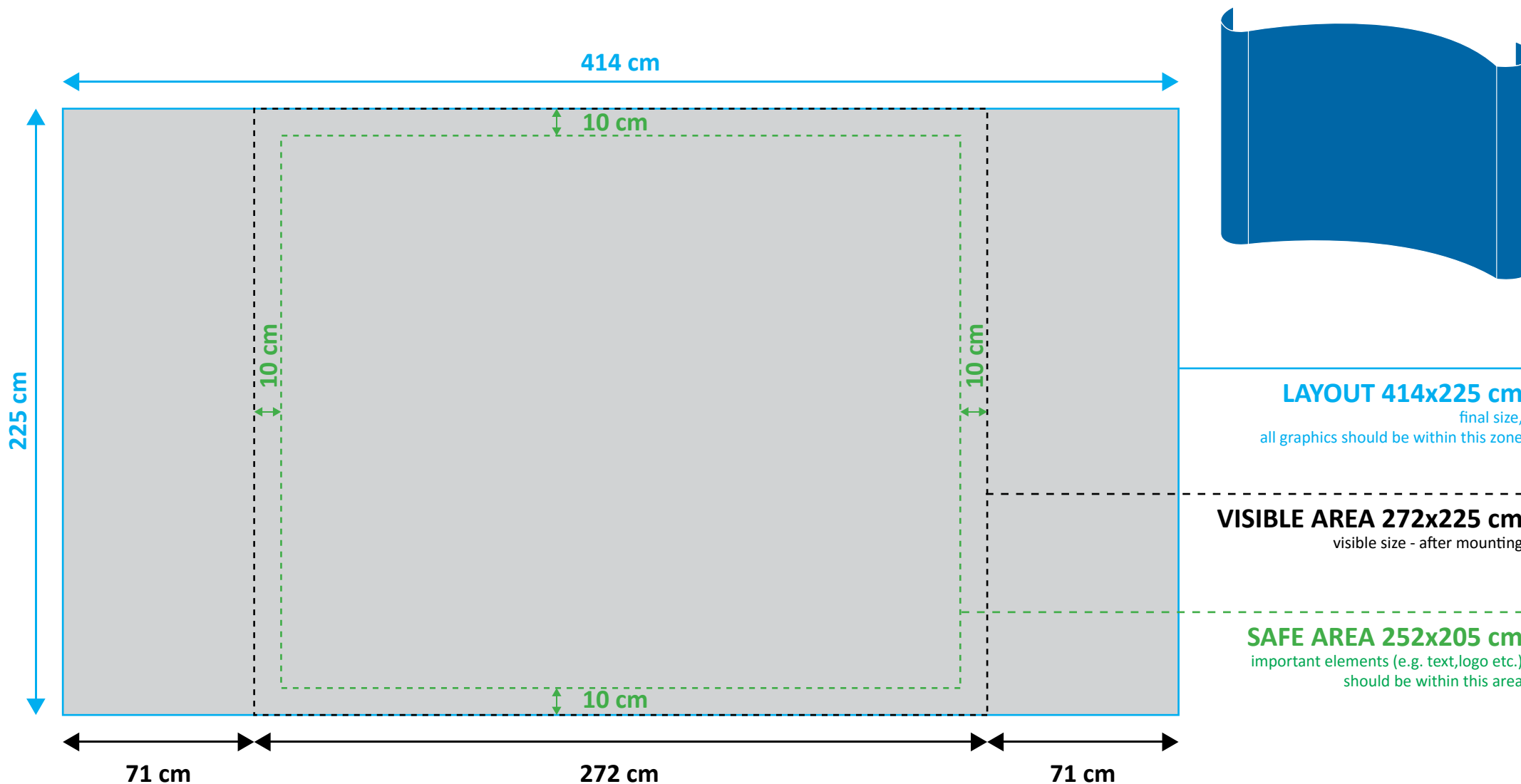
scale 1:1
file format: TIFF, PDF

CMYK colour model
without bleed

resolution 150 dpi
outlined text

POP-UP WALL CURVED 4x3

272 x 225 cm



PREPARING THE FILE FOR PRINT:

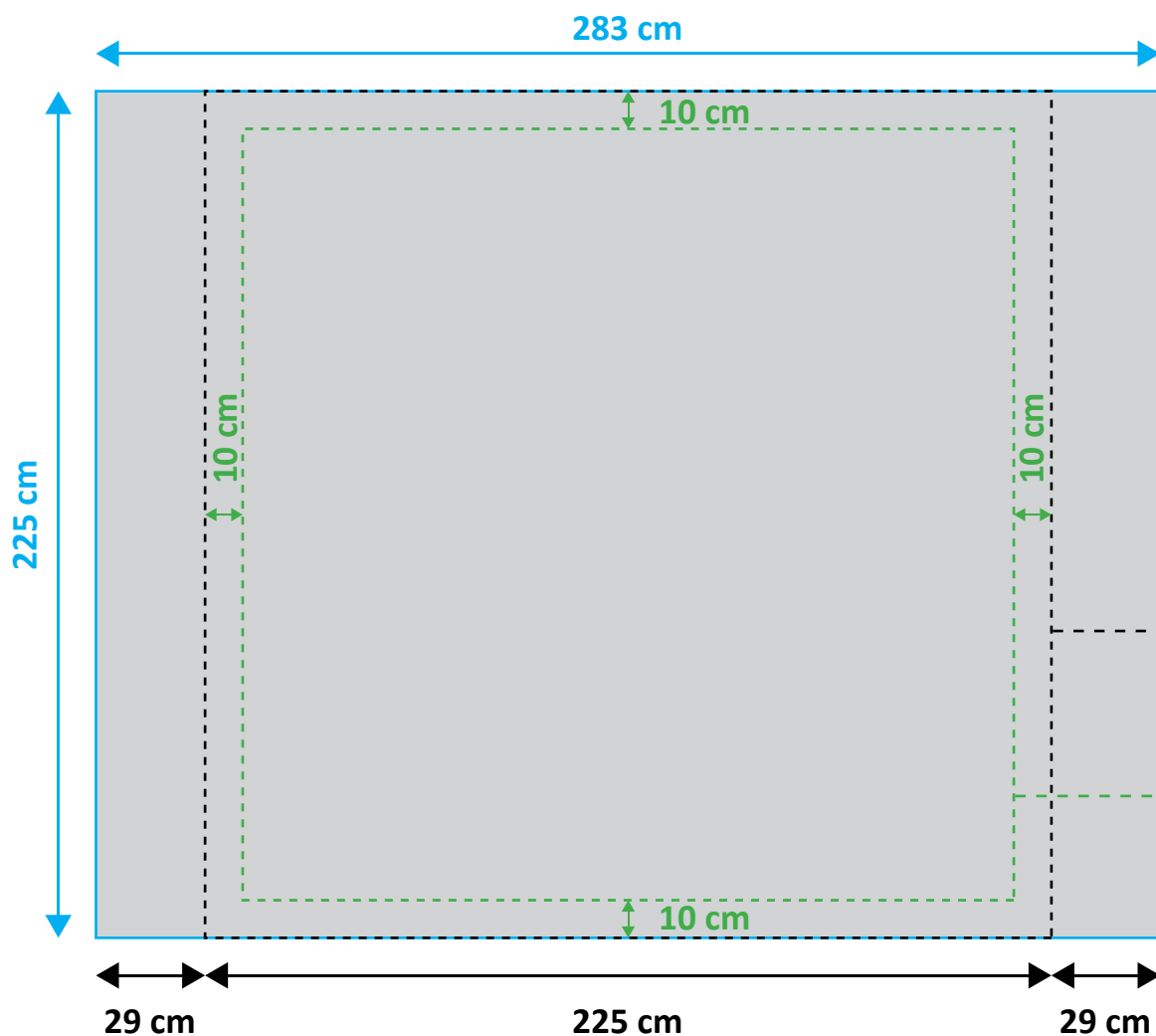
scale 1:1
file format: TIFF, PDF

CMYK colour model
without bleed

resolution 150 dpi
outlined text

POP-UP WALL STRAIGHT 3x3

225 x 225 cm



LAYOUT 283x225 cm

final size,
all graphics should be within this zone

VISIBLE AREA 225x225 cm

visible size - after mounting

SAFE AREA 205x205 cm

important elements (e.g. text, logo etc.)
should be within this area

PREPARING THE FILE FOR PRINT:

scale 1:1

file format: TIFF, PDF

CMYK colour model

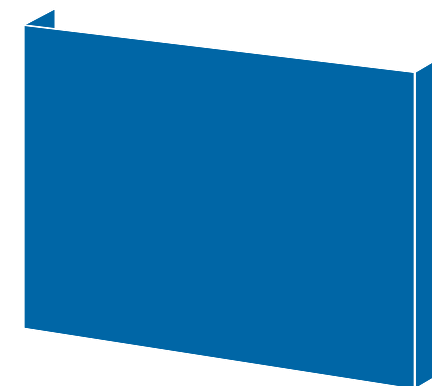
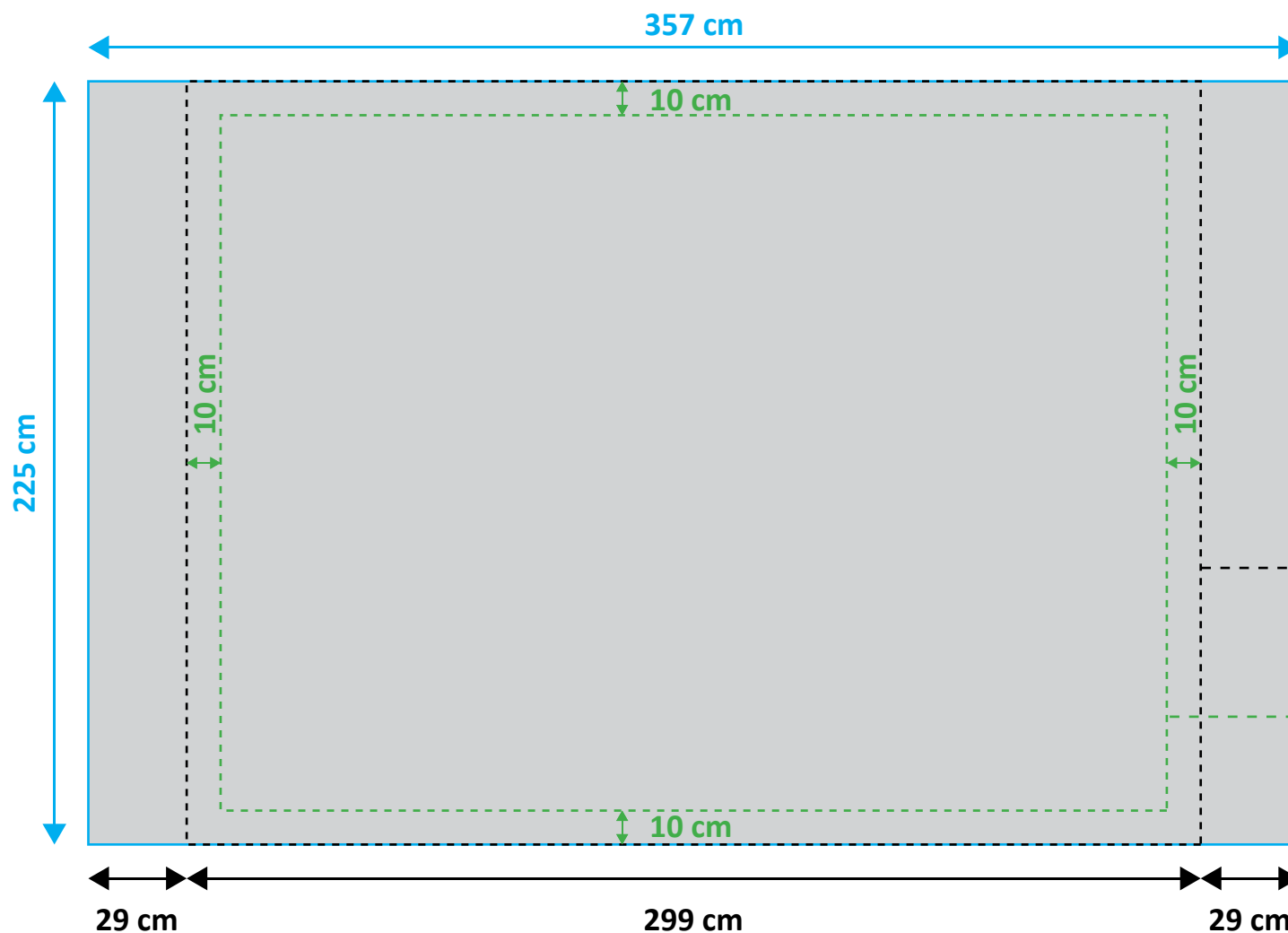
without bleed

resolution 150 dpi

outlined text

POP-UP WALL STRAIGHT 4x3

299 x 225 cm



LAYOUT 357x225 cm

final size,
all graphics should be within this zone

VISIBLE AREA 299x225 cm

visible size - after mounting

SAFE AREA 279x205 cm

important elements (e.g. text, logo etc.)
should be within this area

PREPARING THE FILE FOR PRINT:

scale 1:1

file format: TIFF, PDF

CMYK colour model

without bleed

resolution 150 dpi

outlined text